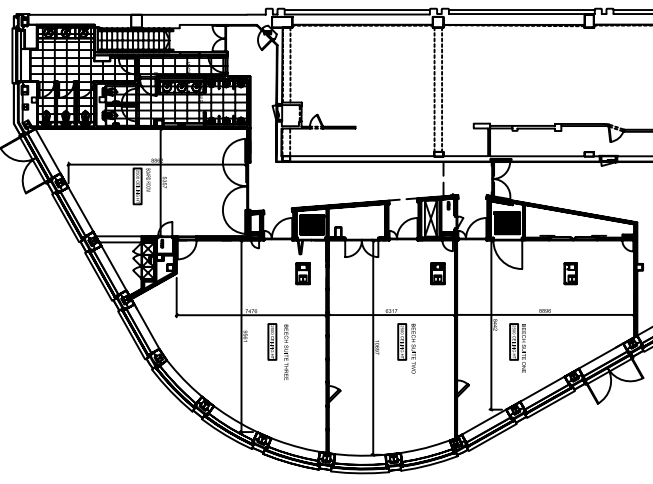


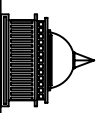
The Forest Suites

Royal Lancaster Hotel
 London W2 2TY
 Tel 0207 262 6737
 Fax 0207 724 3191



FLOOR AREAS

SUITE TYPE	SQM	SOFT
OAK SUITES		
SUITE ONE	31	334
SUITE TWO	40	430
SUITE THREE	83	893
TOTAL AREA	154	1657
WILLOW SUITES		
SUITE ONE	26	290
SUITE TWO	27	291
SUITE THREE	27	291
TOTAL AREA	80	862
CEDAR SUITES		
SUITE ONE	21	226
SUITE TWO	13	140
TOTAL AREA	34	366
BEECH SUITES		
SUITE ONE	65	699
SUITE TWO	66	770
SUITE THREE	74	796
TOTAL AREA	205	2205
BOARDROOM		
TOTAL AREA	53	570
ALL SUITES		
TOTAL AREA	536	5660



ASHLEIGH HOUSE DEVELOPMENTS LTD.
 19, Sheffield Crescent
 Wokingham, Berks, RG40 1TP, UK
 London EC3A 2SN, UK

19, Sheffield Crescent
 Wokingham, Berks, RG40 1TP, UK / Fax: 01189 629 664
 London EC3A 2SN, UK / Tel: 0207 248 5757 / Fax: 0207 248 5858

CLIENT	The Lancaster Landmark Hotel		
PROJECT	Royal Lancaster Hotel		
AREA	Syndicate Rooms		
TITLE	Wall Outlet Locations		
SCALE	DRAWN BY	APPROVED BY	DATE
1 / 200 @ A2	D DAY		22 Feb 05
JOB NO.	DRAWING NO.	REV.	
0422	0422AA003	A	